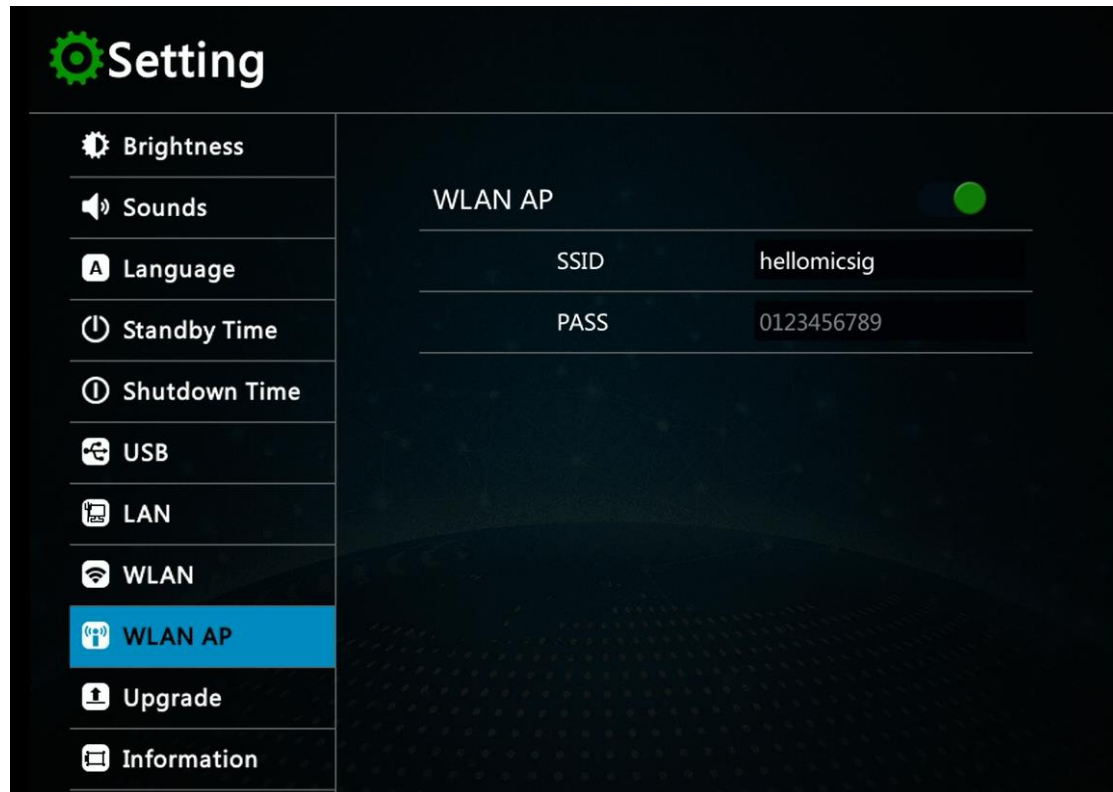


How to use WLAN AP to access the oscilloscope file at PC

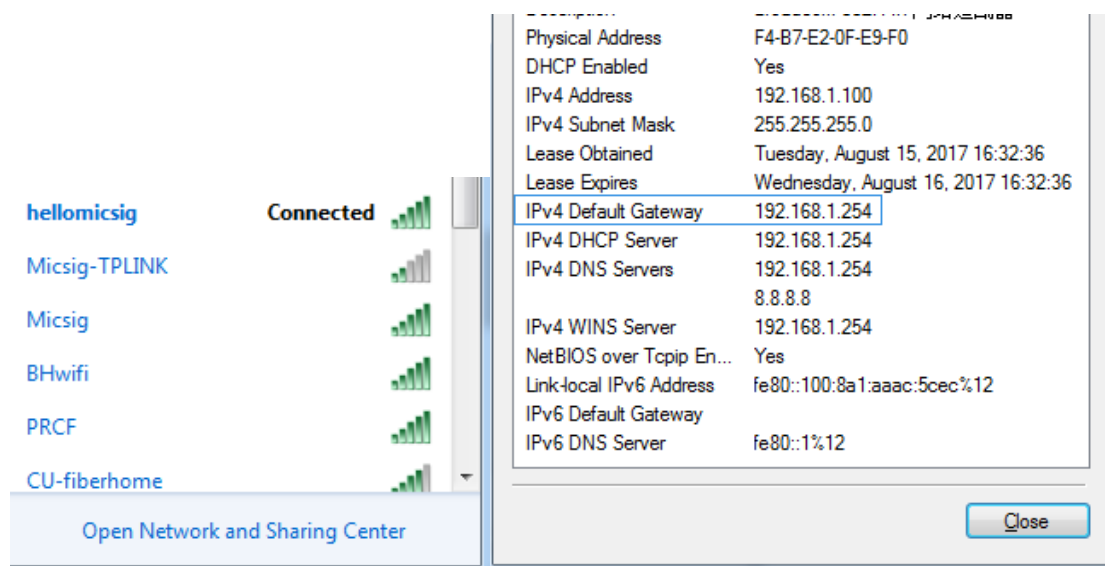
Step 1

Setup the WLAN AP



Step2

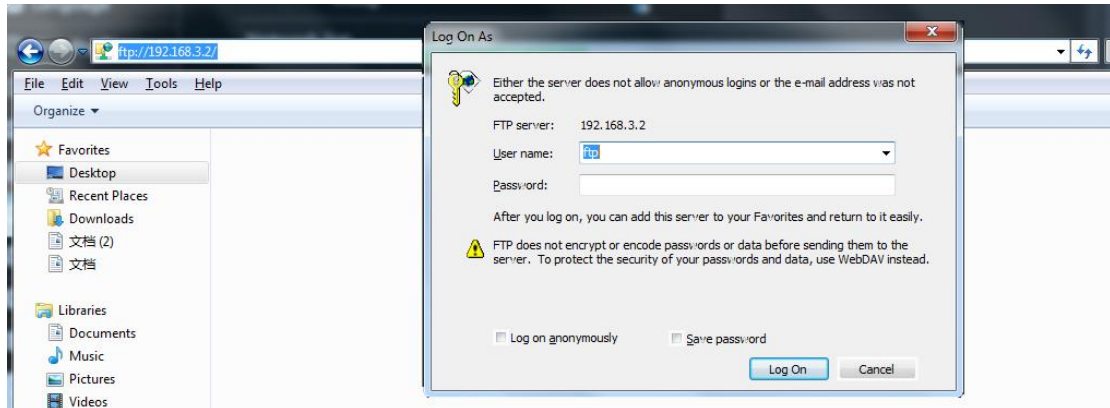
Connect the WLAN AP and get the default gateway address in your PC



Step3

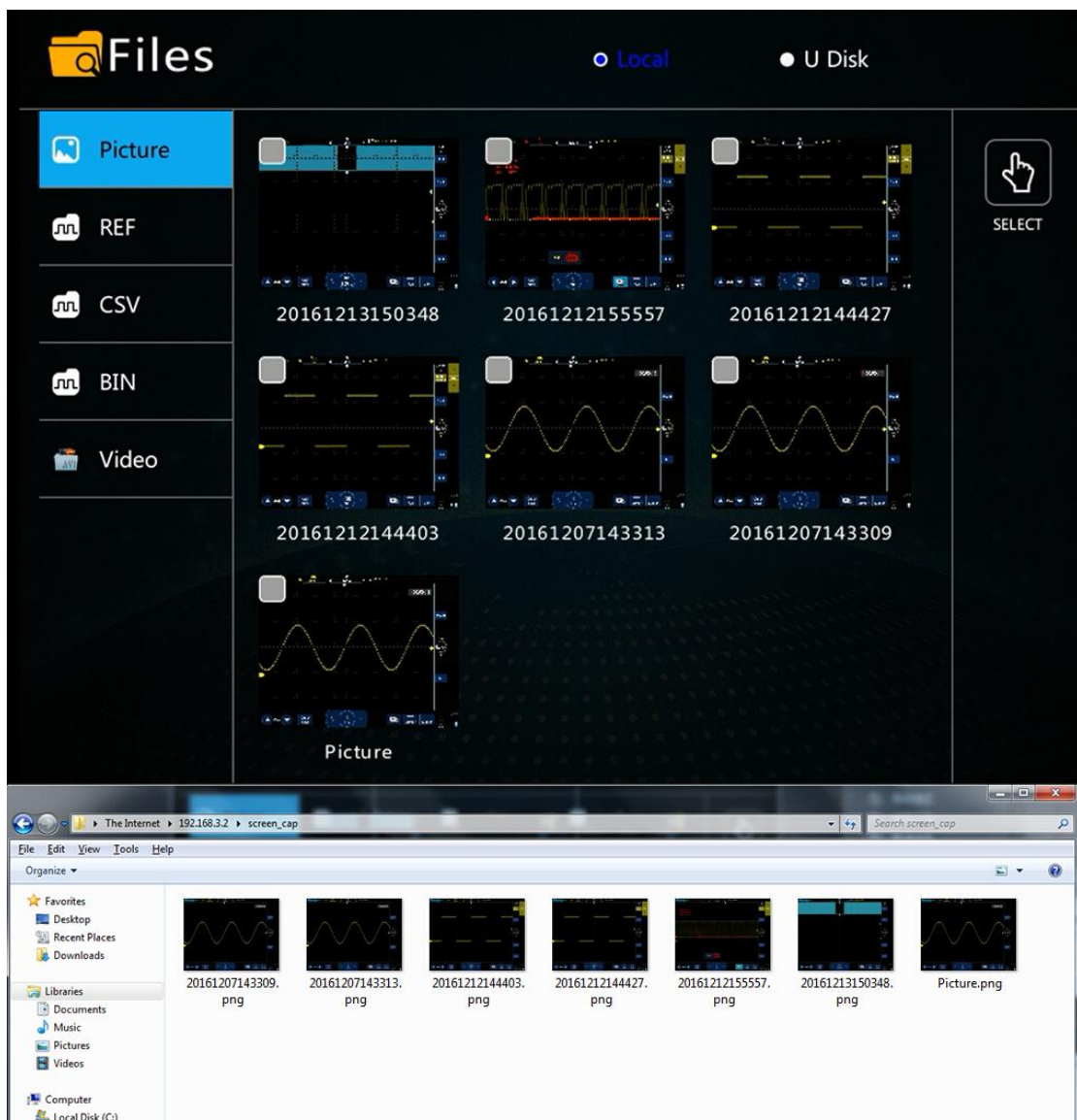
Input the IP Address to your PC address bar with ftp://

Connect to FTP server, username and password were both ftp.



Step4

You can manage any files in your PC



Any question, please contact sales@micsig.com or america@micsig.com.