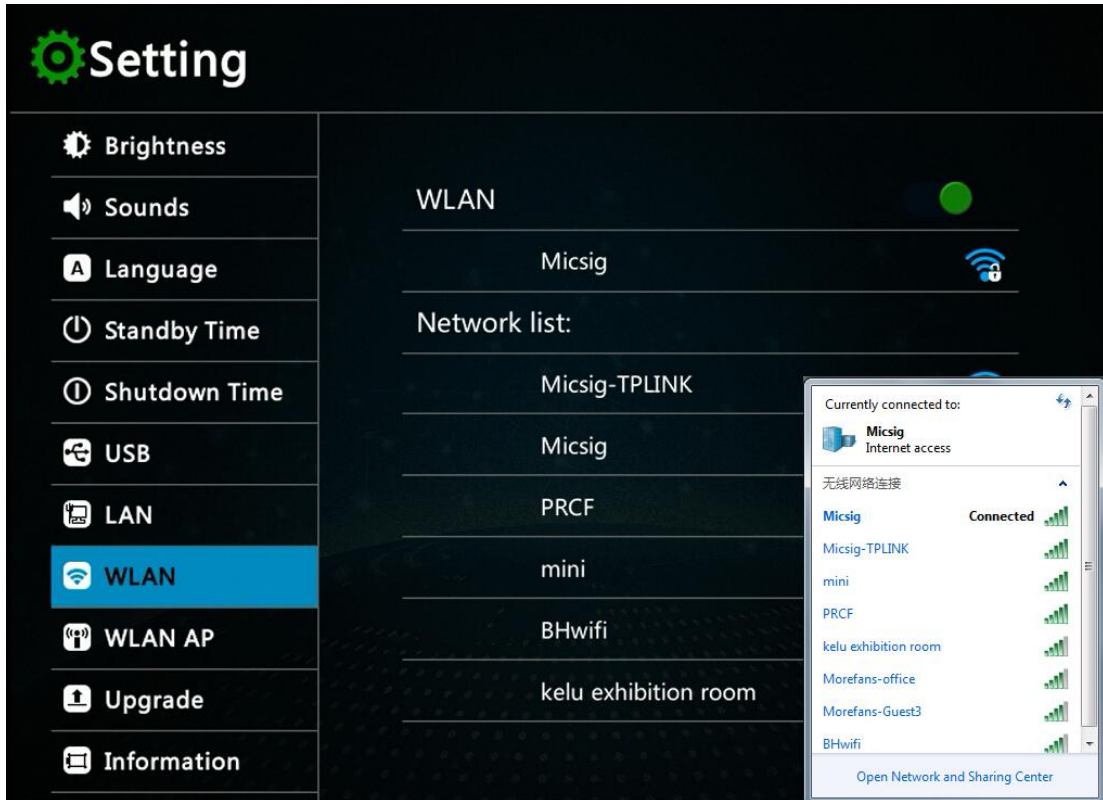


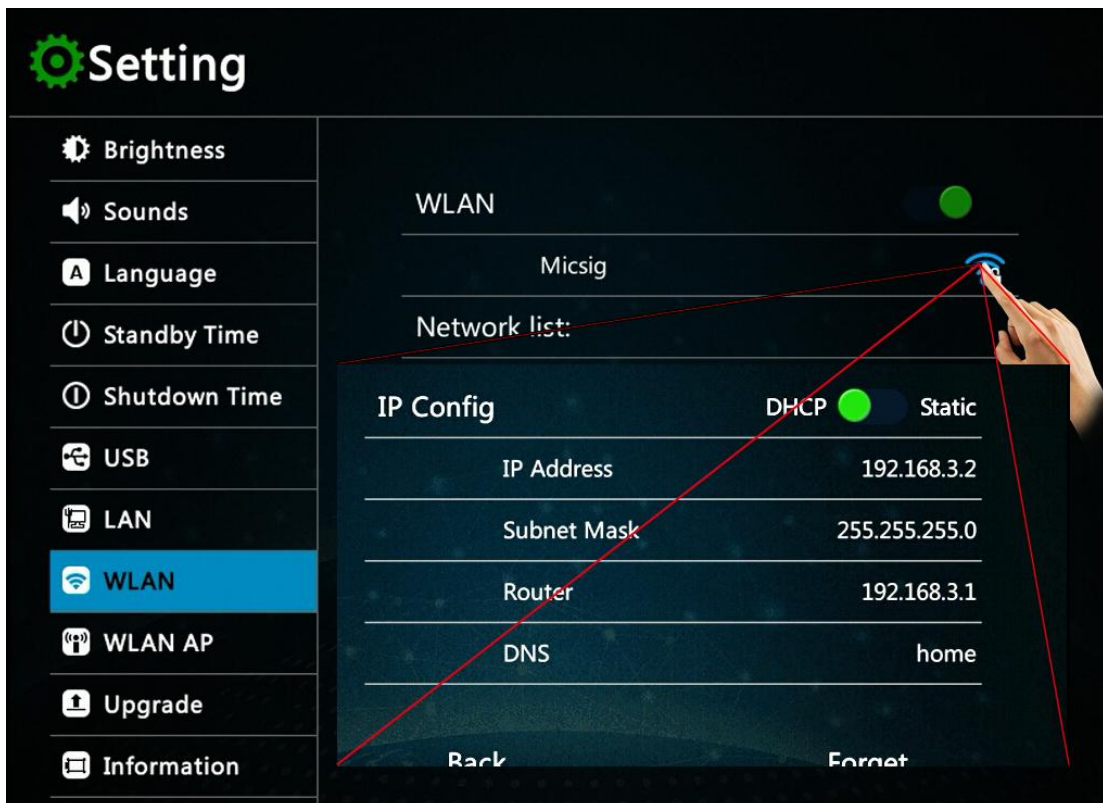
### Step 1 link to Wi-Fi

Please make sure your Scope Wi-Fi is same channel as your computer.  
(see below example)



### Step2

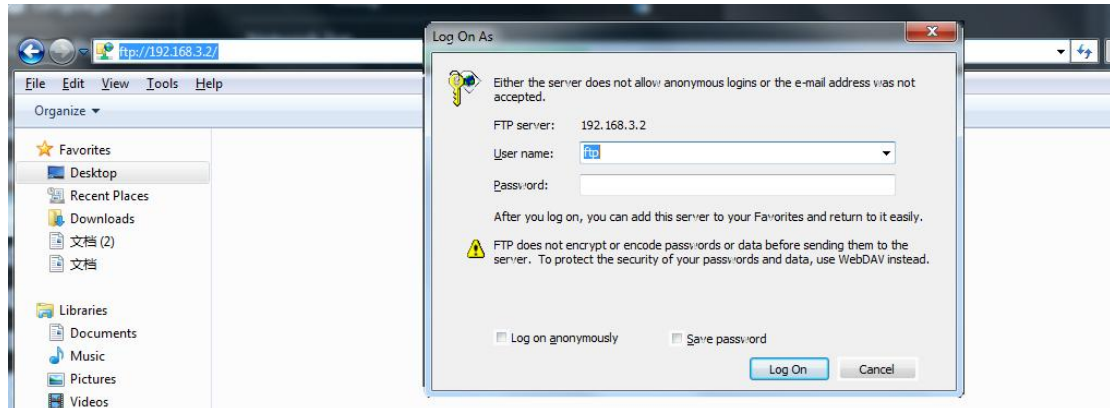
Click the blue Wi-Fi you connected, get the IP Address.



## Step3

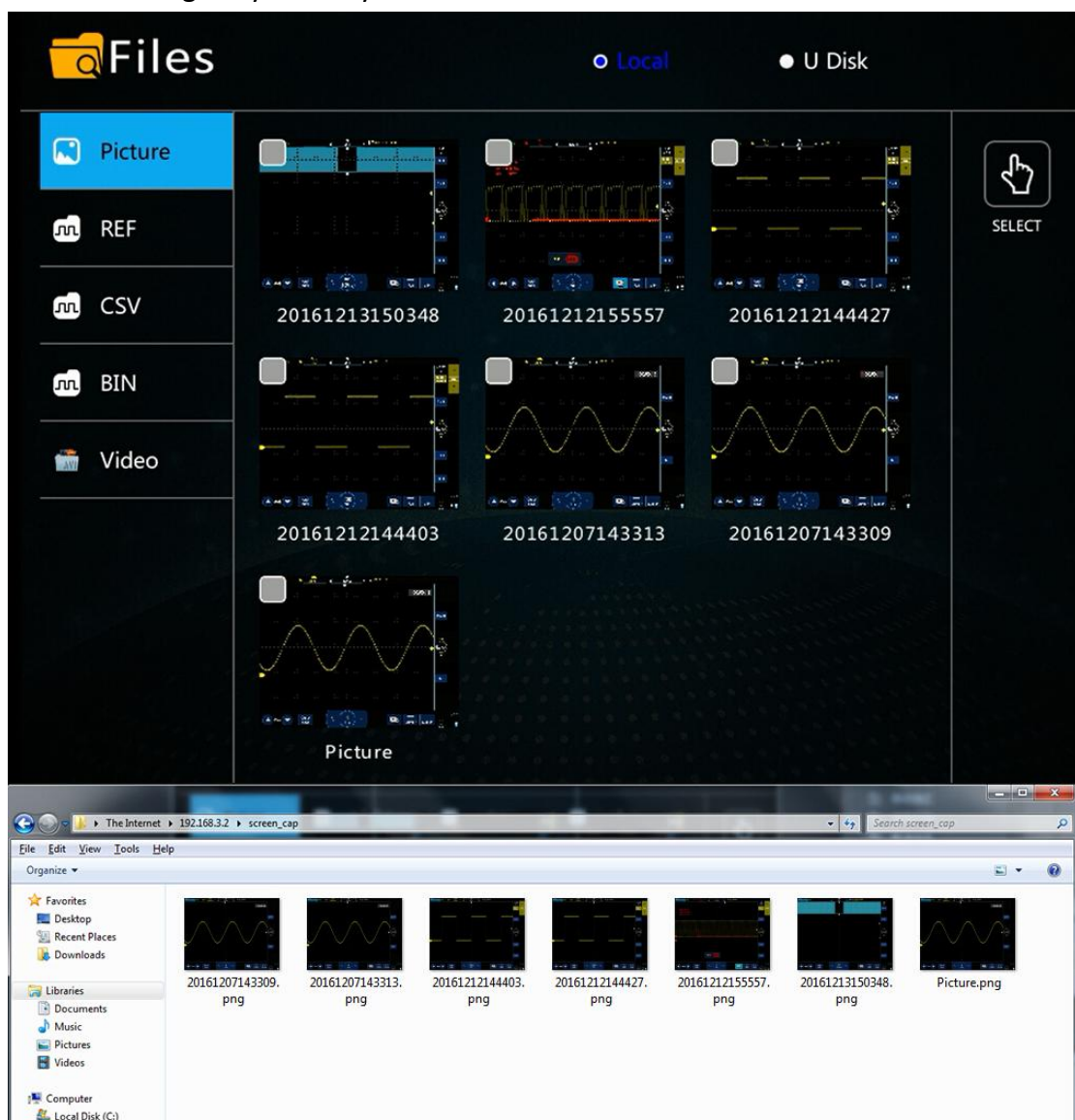
Input the IP Address to your PC address bar with ftp://\_\_\_\_\_ (you IP address)

Connect to FTP server, username and password were both **ftp**.



## Step4

You can manage any files in your PC



Any question, please contact [sales@micsig.com](mailto:sales@micsig.com) or [america@micsig.com](mailto:america@micsig.com).